

## City of Pinehurst and Idaho DEQ Launch Wood Stove Changeout Program

The city of Pinehurst and Idaho Department of Environmental Quality (DEQ) are offering financial incentives to residents of Pinehurst, Kingston, and Enaville areas to put old wood stoves out of commission.

The purpose of the wood stove changeout program is to encourage homeowners to install new, cleaner-burning wood stoves certified by the U.S. Environmental Protection Agency (EPA) or natural gas units.

Pinehurst and DEQ are sponsoring this program to help improve air quality in the Greater Pinehurst area. While the smell of wood smoke may make you feel warm and cozy, smoke from wood stoves is a significant source of air pollution. It contains gases and microscopic particles that can enter your lungs and trigger serious respiratory problems. Old wood stoves produce up to five times as much harmful smoke as newer, EPA-certified models.

Switching to a new, cleaner-burning wood stove makes environmental and economic sense. Read this brochure to find out how you can reduce the amount of smoke in the air, improve air quality, help protect public health, and save money!

### ***Burn Clean, Burn Smart!***

- Burn only dry, seasoned wood.
- Never burn chemically treated wood.
- Build small, hot fires instead of large, smoldering ones to reduce smoke and emission of smoke-related pollutants.
- Inspect and maintain your wood stove.



*Printed on recycled paper. October 2011. Costs associated with this publication are available from the Department of Environmental Quality in accordance with Section 60-202, Idaho Code.*

Return Service Requested

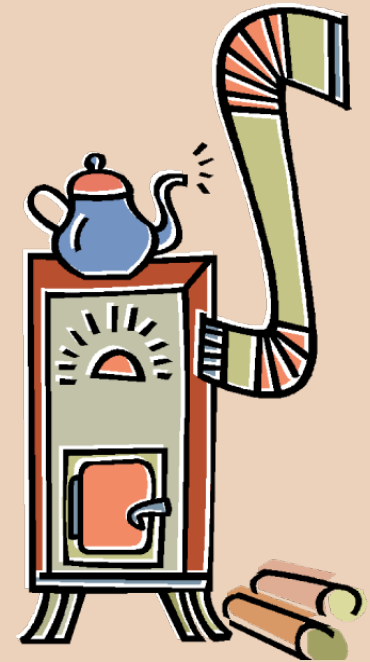
Idaho Department of Environmental Quality  
Coeur d'Alene Regional Office  
2110 Ironwood Parkway  
Coeur d'Alene, ID 83814

Presorted Standard  
U.S. Postage PAID  
Permit #1  
Boise, ID

## *A Special Offer for Pinehurst, Kingston, and Enaville Area Residents*

# Thinking about upgrading your wood stove?

## *Now you can get an \$800 or \$1,500 rebate and a 10% discount!*



Idaho Department of Environmental Quality  
[www.deq.idaho.gov](http://www.deq.idaho.gov)

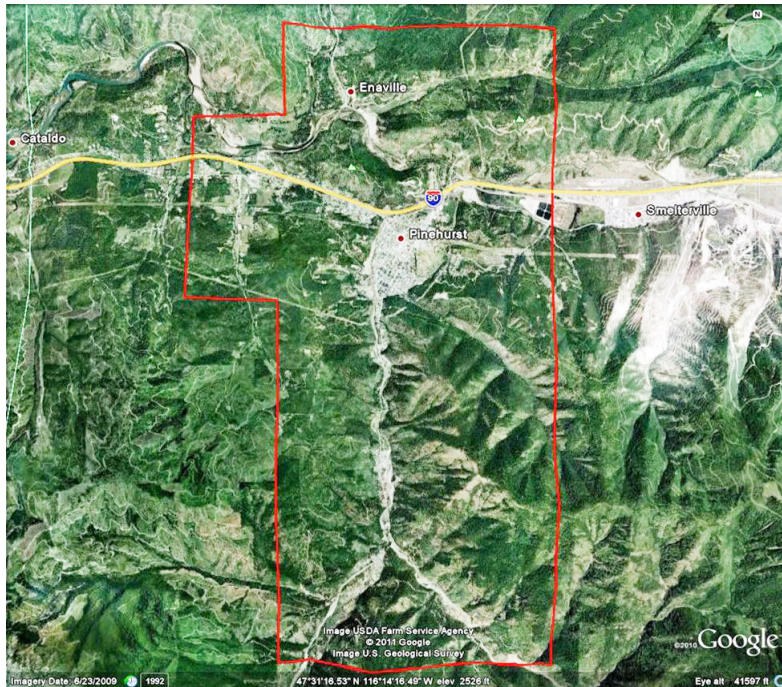
## Financial Incentives Make Upgrading Your Wood Stove a Smart Move!

Replace your non-certified wood stove or fireplace insert with a new EPA-certified unit and you may qualify for:

- an \$800 rebate if you purchase a new wood stove or other qualified unit
- a \$1,500 rebate if you purchase a new heat pump or gas furnace
- an additional 10% discount on the cost of the new wood stove or other qualified unit
- a deduction on your Idaho tax return

### Rebate Offer Available to Pinehurst, Kingston, and Enaville Area Residents Only

To participate in the program, you must be a resident of the Greater Pinehurst area and live in the area identified on the map below.



Your old wood stove is just one of many sources of air pollution in the Greater Pinehurst area, but the cumulative effect of all the wood stoves has a considerable impact on air quality.

## How to Participate in the Wood Stove Changeout Program

### 1. Determine whether the wood stove or fireplace insert you currently own is non-certified.

If your operable wood stove is more than 15 years old, it is probably not certified. You can tell if it is EPA-certified by looking for an informational sticker on the upper corner on the back of the stove. No sticker = not certified.

### 2. Purchase an EPA-certified wood stove or other qualified unit from Mountain Air Heating and Cooling in Pinehurst.

Pinehurst and DEQ have partnered with Mountain Air on the wood stove changeout program.\* By purchasing your new clean-burning appliance at Mountain Air, you will qualify for an \$800 or \$1,500 rebate and an additional 10% discount.

\* Other wood stove retailers may choose to participate in this program.

### 3. Work with Mountain Air to remove the non-certified wood stove or insert from your home and to have the new wood stove, insert, or natural gas unit properly installed.

Mountain Air will provide you with an Old Wood Stove Replacement Receipt verifying that the old stove or insert was destroyed and can no longer be used. Be sure to fill out the receipt completely. This receipt is your verification to the Idaho Tax Commission that your wood stove replacement qualifies for the Alternate Energy Device deduction.

You are allowed to deduct 40% of the cost you accrue (purchase price plus professional installation) in the year the wood stove is replaced. During the next three years, 20% of the total cost may be deducted each year.

### Questions about the tax deduction?

Sue Richards  
Air Quality Analyst  
(208) 373-0586

The new stove, insert, or natural gas unit must be installed in compliance with all applicable city and county codes and regulations.

### Questions about the changeout program?

Pinehurst City Hall  
(208) 682-3721  
or  
Ralph Paul, Idaho DEQ  
(208) 666-4609

Important, please note!  
The rebate and discount  
are offered on a first-  
come, first-served basis.  
Funding is limited.